

# Airflow Sensors Line Guide



**Go with the flow of engineering leadership.** All airflow sensors operate on heat transfer — flow and differential pressure. But Honeywell Sensing and Control (S&C) offers advanced chip design, manufacturing techniques and microstructure technology, allowing our microbridge to be notably faster, smaller and more sensitive. Our silicon chip design is created from a thin-film, thermally isolated bridge structure, containing both heater

and temperature sensing elements. This provides rapid response to the air or gas flow and amount and direction, delivering a proportional output voltage. Amplified versions provide an enhanced output signal and less external circuitry, while unamplified versions allow additional external circuit options. What's more, a variety of port styles provides greater application flexibility.

## FEATURES

### AIRFLOW SENSORS

#### AWM1000 Series.

**Features:** Precision silicon micromachining • Sensitivity to low flows (0.1 SCCM to 200 SLPM) • Enhanced response time • Low power consumption • Analog output • Cost-effective • Bi-directional sensing capability • Low differential pressure sensing • Sensor to sensor interchangeability • Unamplified • Laser trimmed • Mass flow and differential pressure sensing

**Benefits:** Cost-effective microbridge technology for potential applications including HVAC damper control, process control, respirators, oxygen concentrators, gas metering, and chromatography. Differential amplifier circuitry provides output gain and/or introduces voltage offsets to sensor output.

#### AWM2000 Series.

**Features:** Precision silicon micromachining • Sensitivity to low flows (0.1 SCCM to 200 SLPM) • Enhanced response time • Low power consumption • Analog output • Cost-effective • Bi-directional sensing capability • Low differential pressure sensing • Actual mass airflow sensing • Unamplified • Laser trimmed • Sensor to sensor interchangeability • Mass flow and differential pressure sensing

**Benefits:** Cost-effective microbridge technology for potential applications including process control, respirators, ventilators, oxygen concentrators, and leak detection equipment. Differential amplifier circuitry provides output gain and/or introduces voltage offsets to sensor output.

#### AWM3000 Series.

**Features:** Precision silicon micromachining • Sensitivity to low flows (0.1 SCCM to 200 SLPM) • Enhanced response time • Low power consumption • Analog output • Cost-effective • Low differential pressure sensing • Laser trimmed • Amplified • Actual mass airflow sensing • Mass flow and differential pressure sensing • Sensor to sensor interchangeability

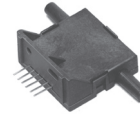
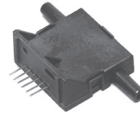
**Benefits:** Amplified signal conditioning increases gain and introduces voltage offsets to sensor output. On board heater control circuit. Laser trimmed for improved sensor interchangeability. Potential applications include HVAC damper control, process control, respirators, leak detection equipment, gas metering, and chromatography.

# Airflow Sensors Line Guide

## Our technology is most sensitive to your needs.

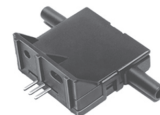
Honeywell S&C offers specially crafted airflow sensor housings to precisely direct and control the airflow across the element. The mechanical package design allows easy mounting to circuit boards, plus other advantages: amplified or un-amplified microbridge airflow; state-of-the-art silicon micromachining; sensitivity to low flows (0.1 SCCM to 200 SLPM); accurate low pressure sensing 0.003 mbar to 10 mbar (0.0001 in H<sub>2</sub>O to 4.0 in H<sub>2</sub>O); analog output; flow range offering ±30 SCCM to 200 SLPM.

Honeywell S&C airflow sensors offer enhanced performance in multiple potential applications, including HVAC system damper control, gas analysis, leak detection equipment, gas metering and chromatography, process control, and vent hoods. In the medical industry, potential applications range from respiratory equipment such as respirators, spirometers, anesthesia and oxygen delivery to sleep apnea equipment.



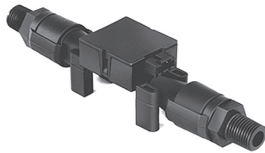
### Airflow Sensors

	AWM1000 Series	AWM2000 Series
<b>Signal conditioning</b>	unamplified	unamplified
<b>Technology</b>	silicon die	silicon die
<b>Flow/pressure range</b>	±200 SCCM, 1000 SCCM to -600 SCCM, ±5,0 mbar [2.0 in H <sub>2</sub> O], ±10,0 mbar [4.0 in H <sub>2</sub> O]	±30 SCCM, ±1000 SCCM, ±10,0 mbar [4.0 in H <sub>2</sub> O]
<b>Power consumption</b>	30 mW typ.	30 mW typ.
<b>Port style</b>	straight	straight
<b>Media capability</b>	dry gas only	dry gas only
<b>Operating temperature range</b>	-25 °C to 85 °C [-13 °F to 185 °F]	-25 °C to 85 °C [-13 °F to 185 °F]



### Airflow Sensors

	AWM3000 Series
<b>Signal conditioning</b>	amplified
<b>Technology</b>	silicon die
<b>Flow/pressure range</b>	30 SCCM, 200 SCCM, 1000 SCCM, 0 mbar to 1,25 mbar [0 in H <sub>2</sub> O to 0.5 in H <sub>2</sub> O], 0 mbar to 5,0 mbar [0 in H <sub>2</sub> O to 2 in H <sub>2</sub> O], 5,0 mbar [2.0 in H <sub>2</sub> O]
<b>Power consumption</b>	50 mW or 100 mW typ.
<b>Port style</b>	straight
<b>Media capability</b>	dry gas only
<b>Operating temperature range</b>	-25 °C to 85 °C [-13 °F to 185 °F]

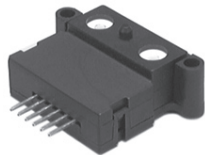


## Airflow Sensors

### AWM5000 Series

### AWM700 Series

<b>Signal conditioning</b>	amplified	amplified
<b>Technology</b>	silicon die	silicon die
<b>Flow/pressure range</b>	0 SLPM to 5,0 SLPM, 0 SLPM to 10,0 SLPM, 0 SLPM to 15,0 SLPM, 0 SLPM to 20,0 SLPM	200 SLPM
<b>Power consumption</b>	100 mW max.	60 mW max.
<b>Port style</b>	1/4 in-18 NPT	22 mm tapered
<b>Media capability</b>	dry gas only	dry gas only
<b>Operating temperature range</b>	-20 °C to 70 °C [-4 °F to 158 °F]	-25 °C to 85 °C [-13 °F to 185 °F]



## Airflow Sensors

### AWM40000 Series

### AWM90000 Series

<b>Signal conditioning</b>	unamplified or amplified	unamplified
<b>Technology</b>	silicon die	silicon die
<b>Flow/pressure range</b>	±25,0 SCCM, 1,0 SLPM, 6,0 SLPM	±200 SCCM, ±5,0 mbar [2.0 in H <sub>2</sub> O]
<b>Power consumption</b>	60 mW max., 75 mW max.	50 mW typ.
<b>Port style</b>	manifold	parallel
<b>Media capability</b>	dry gas only	dry gas only
<b>Operating temperature range</b>	-40 °C to 125 °C [-40 °F to 251 °F] (inclusive)	-25 °C to 85 °C [-13 °F to 185 °F]

### **AWM5000 Series.**

**Features:** Precision silicon micromachining • Sensitivity to low flows (0.1 SCCM to 200 SLPM) • Enhanced response time • Low power consumption • Analog output • Cost-effective • On-board signal conditioning • Venturi type flow housing • Remote mounting capability • Laser trimmed • “AMP” compatible connector • Rugged plastic package • Amplified • Mass flow pressure sensing • Sensor to sensor interchangeability

**Benefits:** Performs amplification, linearization, temperature compensation, and gas calibration. Separate gas calibration types (nitrogen, carbon dioxide, nitrous oxide or argon). Microbridge chip in direct contact with flow stream reduces error due to orifice or bypass channel clogging. In-line flow measurement potential applications including HVAC damper control, oxygen concentrators, leak detection equipment, gas metering, and chromatography. 1 Vdc to 5 Vdc linear output possible regardless of flow range or calibration gas. Active laser trimming improves interchangeability. AMP-compatible connector often provides reliable connection in demanding applications.

### **AWM700 Series.**

**Features:** Precision silicon micromachining • Sensitivity to low flows (0.1 SCCM to 200 SLPM) • Enhanced response time • Low power consumption • Analog output • Cost-effective • High flow range capability in a small package • Highly stable null and full-scale • Compact package design • Extremely low hysteresis and repeatability errors • AMP-compatible connector • Amplified • Mass flow and differential pressure sensing • Sensor to sensor interchangeability

**Benefits:** Performs amplification and temperature compensation. Specially designed bypass flow housing provides in-line flow measurement. Provides combination of enhanced reliability, accuracy, and precision operating characteristics for use in potential medical ventilation equipment and medical and analytical instrumentation applications. Low power consumption for portable devices and battery-powered applications. Enhanced accuracy over life reduces need for recalibration. Snap-in AMP-compatible connector provides reliable connection.

### **AWM40000 Series.**

**Features:** Precision silicon micromachining • Sensitivity to low flows (0.1 SCCM to 200 SLPM) • Enhanced response time • Low power consumption • Analog output • Cost-effective • Repeatable response • Laser trimmed • Standard mounting centers • Amplified and unamplified • Mass flow pressure sensing • Sensor to sensor interchangeability

**Benefits:** Sensitive to low flows, adaptable for use with higher flows for potential applications including process control, respirators, ventilators, oxygen concentrators, gas metering, and chromatography. Low power consumption for portable devices and battery-powered applications. Laser-trimmed thick-film and thin-film resistors designed to provide consistent interchangeability from one device to the next.

### **AWM90000 Series.**

**Features:** Precision silicon micromachining • Sensitivity to low flows (0.1 SCCM to 200 SLPM) • Low power consumption • Analog output • Cost-effective • Bi-directional sensing capability • Low differential pressure sensing • Actual mass airflow sensing • Enhanced response time • Unamplified • Mass flow and differential pressure sensing

**Benefits:** Proven thermal bridge technology. Two versions available, mass flow and differential pressure. Provides ability to customize sensor function for potential applications including HVAC damper control, process control, respirators, ventilators, oxygen concentrators, leak detection equipment, gas metering, and chromatography. Low power consumption for portable devices and battery-powered applications.

**Warranty.** Honeywell warrants goods of its manufacture as being free of defective materials and faulty workmanship. Honeywell's standard product warranty applies unless agreed to otherwise by Honeywell in writing; please refer to your order acknowledgement or consult your local sales office for specific warranty details. If warranted goods are returned to Honeywell during the period of coverage, Honeywell will repair or replace, at its option, without charge those items it finds defective. **The foregoing is buyer's sole remedy and is in lieu of all warranties, expressed or implied, including those of merchantability and fitness for a particular purpose. In no event shall Honeywell be liable for consequential, special, or indirect damages.**

While we provide application assistance personally, through our literature and the Honeywell web site, it is up to the customer to determine the suitability of the product in the application.

Specifications may change without notice. The information we supply is believed to be accurate and reliable as of this printing. However, we assume no responsibility for its use.

For more information about Sensing and Control products, visit [www.honeywell.com/sensing](http://www.honeywell.com/sensing) or call +1-815-235-6847. Email inquiries to [info.sc@honeywell.com](mailto:info.sc@honeywell.com)

 **WARNING**  
**PERSONAL INJURY**

- DO NOT USE these products as safety or emergency stop devices or in any other application where failure of the product could result in personal injury.

**Failure to comply with these instructions could result in death or serious injury.**

 **WARNING**  
**MISUSE OF DOCUMENTATION**

- The information presented in this catalogue is for reference only. DO NOT USE this document as product installation information.
- Complete installation, operation and maintenance information is provided in the instructions supplied with each product.

**Failure to comply with these instructions could result in death or serious injury.**

Sensing and Control  
Automation and Control Solutions  
Honeywell  
1985 Douglas Drive North  
Golden Valley, MN 55422 USA  
+1-815-235-6847  
[www.honeywell.com/sensing](http://www.honeywell.com/sensing)

008150-2-EN IL50 GLO  
June 2009  
Copyright © 2009 Honeywell International Inc. All rights reserved.

**Honeywell**

# Notes